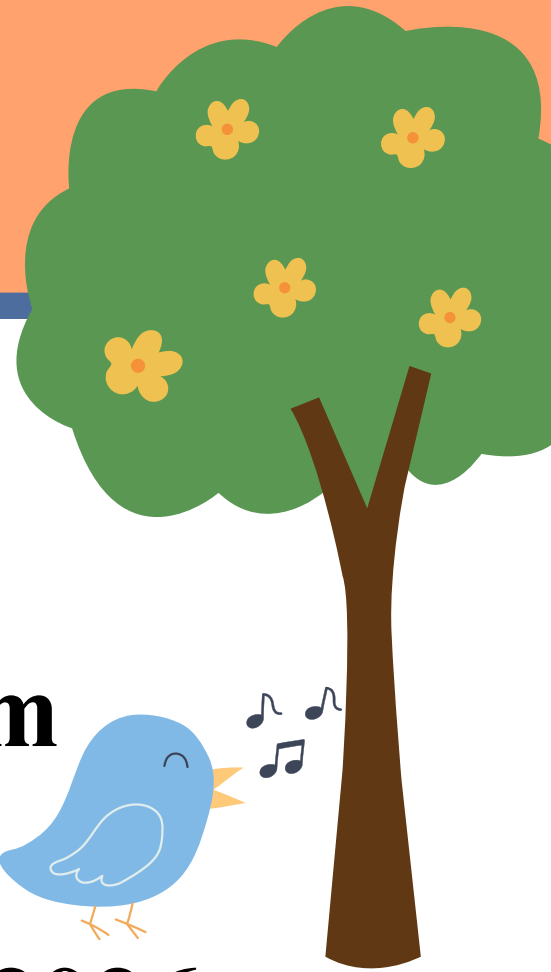




# MAY

*Newsletter*



## IMPORTANT INFO:

### Early Dismissal

**May 29, 2026 at 12 pm**

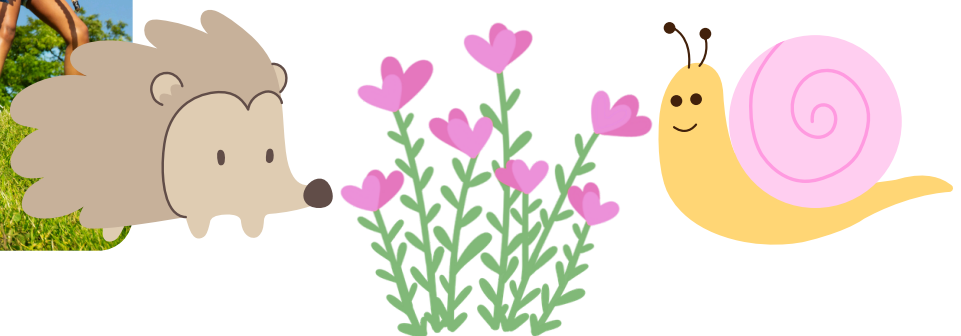


**No School - May 25, 2026**



## UPCOMING EVENTS:

- 5/15- Field Day
- 5/28 - Graduation
- 5/28 GMCS Board Meeting @ 6pm
- 5/29 Last Day of School



# STAY CONNECTED WITH GMCS!



**Please make sure you're following our official school Facebook page at:**

**<https://www.facebook.com/GettysburgMontessori/>**

**This is the only page officially affiliated with Gettysburg Montessori Charter School.**

**No other Facebook pages are monitored or endorsed by the school.**

**Stay up to date with important announcements, event highlights, and school news — all in one place!**



# Teacher & Staff Appreciation WEEK

MAY 04 - 08

Monday

## Flower Monday

Flood your teachers and staff with love by bringing flowers (Fresh or handmade)



Tuesday

## Less Teachin' More Beachin'

Send your teacher on a vacay by wearing tropical clothes!  
Treat Day  
Bring a small treat or favorite drink for a staff member



Wednesday

## Crazy for our Teacher

Wacky Wednesday!  
let's celebrate our amazing teachers in the silliest way possible! Students are invited to bring their teacher a "wacky snack"



Thursday

## Dress up Day

Show how much you know about your teacher by wearing their favorite color, sport team, or other interest!



Friday

## Dr. Pleso Day

Today we celebrate Dr. Pleso and her retirement after 12 wonderful years of dedication to GMCS.  
Let's send her off in style!  
Dress like Dr. Pleso or wear your GMCS gear!  
Make a card, and show her just how much she means to all of us.  
Let's make it a day she'll never forget!

Help us say **THANK YOU**  
to our GMCS Staff for all they do!



## **GMCS Talent Show: A Spectacular Success!**

**The stage was set, the lights were bright, and our students truly stole the show! From music and dance to comedy and creativity, this year's Talent Show was a celebration of courage, confidence, and the unique gifts each student brings. It takes heart to step onto that stage and our performers did just that, leaving the audience cheering and inspired.**

**Moments like these remind us that talent comes in many forms, and when given the chance to shine, our students never disappoint.**

# PLAYGROUND

## PARENTAL OR GUARDIAN SUPERVISION REQUIRED FOR PLAYGROUND EQUIPMENT - PLAY AT YOUR OWN RISK

### **General Playground Safety Guidelines:**

**Supervision:** All students must be supervised by an adult at all times.

**Equipment Checks:** Please report any damaged or malfunctioning equipment to the office immediately.

**Safe Play:** Encourage students to play safely, avoid roughhousing, and be mindful of others.

**Weather Awareness:** Ensure students are dressed appropriately for the weather and limit outdoor time if conditions require it.

**Dogs:** Dogs are not permitted in the playground area.





**Dear GMCS Families,**

**If your child keeps medication in the nurse's office, please remember to pick up your child's medication(s) by noon on the last of school. No medications will be held over until September. Any medications left in the Health Room will be discarded. Parents/guardians are responsible for picking up student medications directly from the school health room. Medications will not be sent home with students.**

**New orders and new medications will be required for the next school year. Please have your child's primary care provider (PCP) complete the Medication Administration form after July 1st, for the new school year. If your child has asthma or a severe allergy, a current Action Plan is preferred as an order. You are not required to use the school's form. Many clinics use their forms.**

**Bring these to school for Back to School Night the week before school starts, or between 8:00 am and 3:30 am on the first day of school. Do not send medications to school with your child on the bus, unless the doctor gave signed approval for student self-carry of inhaler or EpiPen, and you have already provided the form to the nurse.**

**Medication Administration Forms can be found online at <https://www.gettysburgmontessoricharter.org/gmcs-forms/>**

**If your student is attending summer school, you are responsible for coordinating with that program and providing the inhaler or EpiPens for the summer program.**

**Wishing you a happy and healthy summer!  
Nurse Margaret Sarnoff**

**SAVE THE DATE**  
**2026**  
**SPRING MUSIC**  
**CONCERT**  
**DRAMA PRODUCTION**  
**3-6 GRADE**

Date : Thursday, May 7, 2026

Time : 6pm

Location : GMCS Multipurpose Room





**HELLO  
SUMMER**



**GMCS**  
**SCHOOL SPIRIT**  
**WEEK**

**MAY 26-30**

**TUESDAY, MAY 26 – BEACH DAY**

**WEDNESDAY, MAY 27 – WACKY WEDNESDAY**

**THURSDAY, MAY 28 – DRESS TO IMPRESS**

**FRIDAY, MAY 29 – SUNGLASSES DAY**

**WEAR YOUR FAVORITE COLOR TO START  
SUMMER BREAK!**

**HAPPY SUMMER!**





# *Class of 2026*

**SAVE THE DATES FOR GRADUATIONS  
MAY 28, 2026**

**KINDERGARTEN - 9:00AM  
6TH GRADE - 1:00PM**

**MORE INFORMATION WILL BE SENT HOME  
FROM YOUR STUDENTS HOMEROOM TEACHER**

# **Field Day**

## **May 15, 2026**

### **No Parent Spectators**

**Due to limited parking, parents will not be able to attend Field Day this year. However, if you'd like to volunteer, don't hesitate to get in touch with the front office for more information.**

**All volunteers must have the required clearances.**

**Come prepared for the sun!**

- Apply sunscreen before coming to school.**
- Wear sun-protective hats and clothing.**
- Bring your own non-aerosol sunscreen and a signed permission slip.**
- Know how to apply your own sunscreen.**
- Do not share sunscreen with others.**
- All students must wear sneakers with socks.**





# GMCS Reunion Night

We're excited to bring everyone back together for an evening of memories, connection, and celebration. This year, the night will be especially meaningful as we also honor the retirement of Dr. Pleso and recognize the lasting impact of her dedication and service.

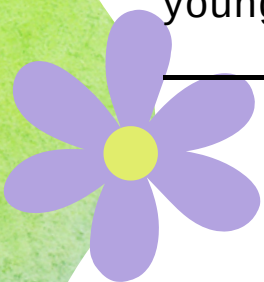
We hope to see you there for this special occasion!

Please submit the RSVP Google Form located below (link or QR code) by **Monday, May 20<sup>th</sup>, 2026**.

It is important that you RSVP so we have enough food prepared. Each attendee will receive a food voucher for K & K Concessions.

A parent/adult **MUST** accompany any child(ren) 17 or younger for the duration of your stay at the event!

[Google Form Link](#)



**MONDAY JUNE 1  
5 PM - 7 PM**

888 Coleman Road  
Gettysburg, PA 17325





**Attention 3rd through 6th Grade Families!**

**You are cordially invited to the**

*Civil War Evening Showcase*

**Join us on Thursday May 21, 2026**

**5 pm to 7 pm**

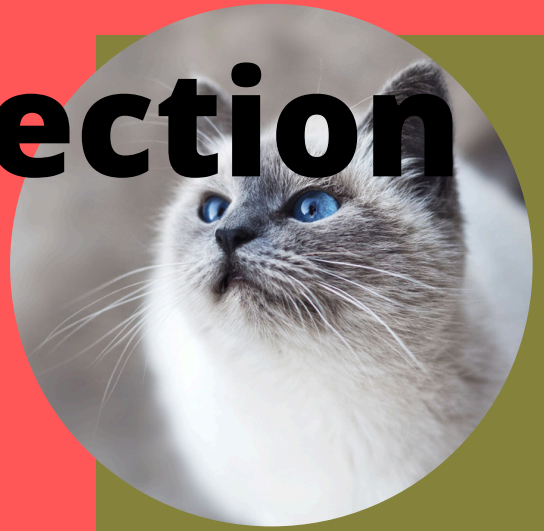
**In the GMCS Gymnasium,**

**you will get the opportunity to learn different dances originating  
from the Civil War Era.**

**Also, you will be able to see the progress your child has made on  
their projects during our Artists in Residence program!**

**This program is supported in part by the Adams County Arts Council's STAR Grant Program which is  
funded by the Adams County Commissioners, the Borough of Gettysburg, and the Robert C.  
Hoffman Charitable Endowment Trust.**

# ASPCA Collection



We are teaming up with the ASPCA  
to collect items from May 01 - May 17.  
We will have a drop off box  
outside the front office.

To donate directly to the SPCA , or to see the  
wish list please use the link below.

<https://www.adamscountyspca.org/wish-list>



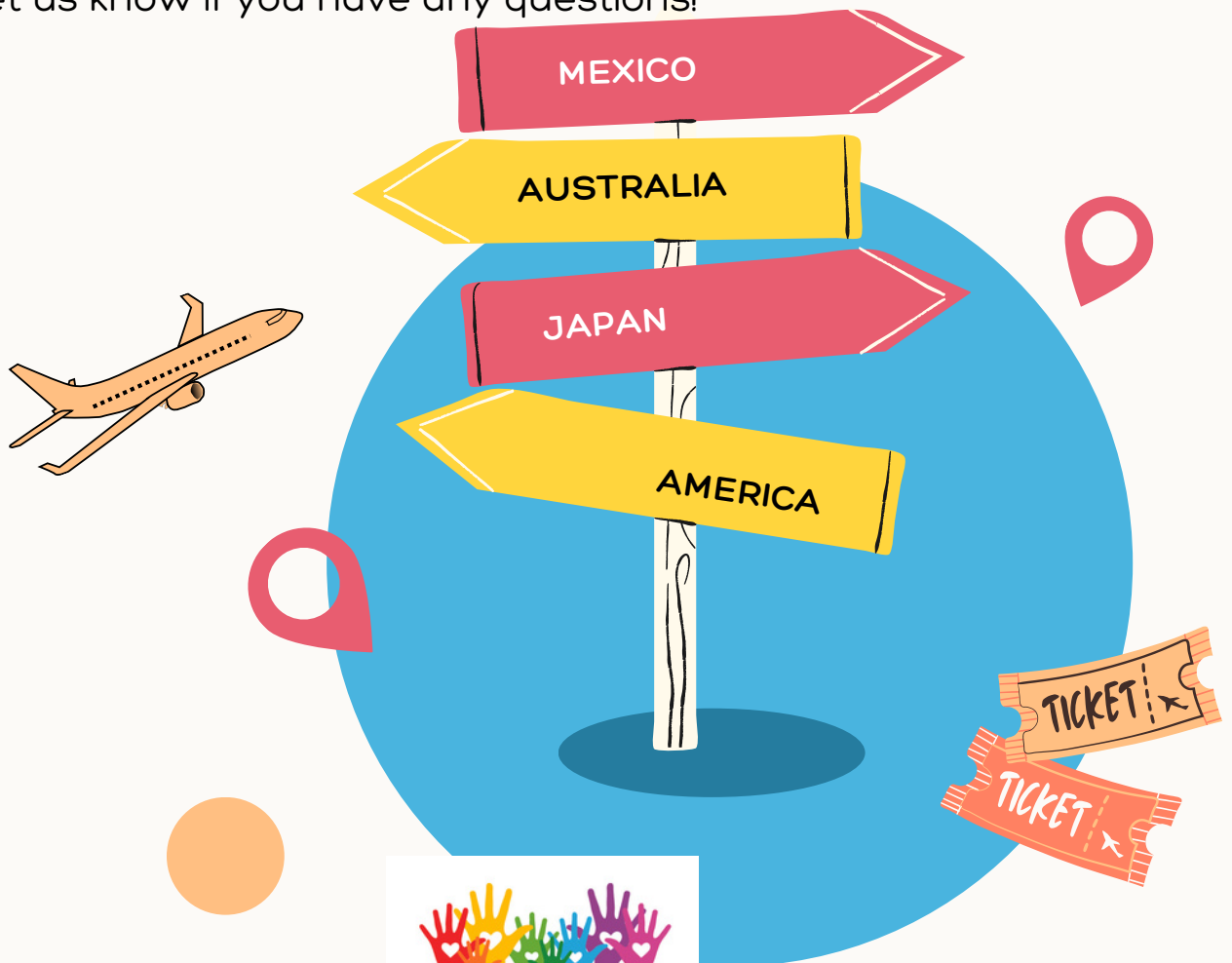
# 2026 SUMMER CAMP

# ADVENTURES AROUND THE WORLD



Don't miss out on this year's camp! We'll be traveling around the world, learning about countries like Africa, Mexico, Japan, Australia, and wrapping up the week by celebrating America 250.

Be sure to save the date for our Summer 250 American-style picnic on **August 7th from 1:00-2:00 PM**. Please submit the permission slip by June 3rd, 2026. Let us know if you have any questions!





**GMCS proudly presents**  
**Family Skate Night at Magic Elm**  
**located in Hanover**

**Start summer with some  
family fun!**

**SAVE THE DATE : June 09, 2026**  
**Admission is free**  
**Skate Rental is \$3.00**

**Date:**

**Time: 6:00 pm to 8:00 pm**

**Location - 625 W Elm Ave,  
Hanover, PA 17331**

**Please Note**

**\*This is NOT a drop off event.  
Parent supervision is required\***

# *Save The Dates*

**GMCS Skate Night**

**June 09, 6:00 pm**

**GMCS Summer School**

**August 03-07**

**9:00 am - 12:00 pm**

**Please sign up by May 28, 2026**

**Back to School Night**

**August 17, 2026**

**4:30 pm to 6:00 pm**

**1st day of School**

**August 19, 2026**

PLEASE CONTACT THE OFFICE  
WITH ANY QUESTIONS.

# Gettysburg Montessori Charter School Calendar 2026-2027

| August |    |    |    |    |    | 2026 |
|--------|----|----|----|----|----|------|
| S      | M  | T  | W  | T  | F  | S    |
|        |    |    |    |    |    | 1    |
| 2      | 3  | 4  | 5  | 6  | 7  | 8    |
| 9      | 10 | 11 | 12 | 13 | 14 | 15   |
| 16     | 17 | 18 | 19 | 20 | 21 | 22   |
| 23     | 24 | 25 | 26 | 27 | 28 | 29   |
| 30     | 31 |    |    |    |    |      |

August 10-18 Room Prep / Professional Development

Back to School Night Aug 17

First Day of School Aug 19

| September |    |    |    |    | 2026 |    |
|-----------|----|----|----|----|------|----|
| S         | M  | T  | W  | T  | F    | S  |
|           |    | 1  | 2  | 3  | 4    | 5  |
| 6         | 7  | 8  | 9  | 10 | 11   | 12 |
| 13        | 14 | 15 | 16 | 17 | 18   | 19 |
| 20        | 21 | 22 | 23 | 24 | 25   | 26 |
| 27        | 28 | 29 | 30 |    |      |    |

Sept 7 No School / Labor Day Holiday

Sept 21 No School /Teacher Report

| October |    |    |    |    | 2026 |    |
|---------|----|----|----|----|------|----|
| S       | M  | T  | W  | T  | F    | S  |
|         |    |    |    | 1  | 2    | 3  |
| 4       | 5  | 6  | 7  | 8  | 9    | 10 |
| 11      | 12 | 13 | 14 | 15 | 16   | 17 |
| 18      | 19 | 20 | 21 | 22 | 23   | 24 |
| 25      | 26 | 27 | 28 | 29 | 30   | 31 |

Oct 09 No School

Oct 12 No School/Teacher Report

Oct 23 End of marking period

| November |    |    |    |    |    | 2026 |
|----------|----|----|----|----|----|------|
| S        | M  | T  | W  | T  | F  | S    |
| 1        | 2  | 3  | 4  | 5  | 6  | 7    |
| 8        | 9  | 10 | 11 | 12 | 13 | 14   |
| 15       | 16 | 17 | 18 | 19 | 20 | 21   |
| 22       | 23 | 24 | 25 | 26 | 27 | 28   |
| 29       | 30 |    |    |    |    |      |

Nov 18,19 America 250

Nov 25-30 No School / Thanksgiving Holiday

| December |    |    |    |    |    | 2026 |
|----------|----|----|----|----|----|------|
| S        | M  | T  | W  | T  | F  | S    |
|          |    | 1  | 2  | 3  | 4  | 5    |
| 6        | 7  | 8  | 9  | 10 | 11 | 12   |
| 13       | 14 | 15 | 16 | 17 | 18 | 19   |
| 20       | 21 | 22 | 23 | 24 | 25 | 26   |
| 27       | 28 | 29 | 30 | 31 |    |      |

Dec 14 No School /Teacher Report

Dec 23 – Jan 02 No School/Winter Break

| January |    |    |    |    |    | 2027 |
|---------|----|----|----|----|----|------|
| S       | M  | T  | W  | T  | F  | S    |
|         |    |    |    |    | 1  | 2    |
| 3       | 4  | 5  | 6  | 7  | 8  | 9    |
| 10      | 11 | 12 | 13 | 14 | 15 | 16   |
| 17      | 18 | 19 | 20 | 21 | 22 | 23   |
| 24      | 25 | 26 | 27 | 28 | 29 | 30   |
| 31      |    |    |    |    |    |      |

Jan 01 Winter Break

Jan 12 End of marking

Jan 18 No School/MLK

| February |    |    |    |    |    | 2027 |
|----------|----|----|----|----|----|------|
| S        | M  | T  | W  | T  | F  | S    |
|          | 1  | 2  | 3  | 4  | 5  | 6    |
| 7        | 8  | 9  | 10 | 11 | 12 | 13   |
| 14       | 15 | 16 | 17 | 18 | 19 | 20   |
| 21       | 22 | 23 | 24 | 25 | 26 | 27   |
| 28       |    |    |    |    |    |      |

Feb 15 No School – President's Day

| March |    |    |    |    |    | 2027 |
|-------|----|----|----|----|----|------|
| S     | M  | T  | W  | T  | F  | S    |
|       | 1  | 2  | 3  | 4  | 5  | 6    |
| 7     | 8  | 9  | 10 | 11 | 12 | 13   |
| 14    | 15 | 16 | 17 | 18 | 19 | 20   |
| 21    | 22 | 23 | 24 | 25 | 26 | 27   |
| 28    | 29 | 30 | 31 |    |    |      |

March 3 No School / Teachers Report

March 19 End of the marking period

March 25-29 No School Spring

| April |    |    |    |    |    | 2027 |
|-------|----|----|----|----|----|------|
| S     | M  | T  | W  | T  | F  | S    |
|       |    |    |    | 1  | 2  | 3    |
| 4     | 5  | 6  | 7  | 8  | 9  | 10   |
| 11    | 12 | 13 | 14 | 15 | 16 | 17   |
| 18    | 19 | 20 | 21 | 22 | 23 | 24   |
| 25    | 26 | 27 | 28 | 29 | 30 |      |

April 16 No School

April 19 No School / Teachers Report

PSSA ELA 26-30

| May |    |    |    |    |    | 2027 |
|-----|----|----|----|----|----|------|
| S   | M  | T  | W  | T  | F  | S    |
|     |    |    |    |    |    | 1    |
| 2   | 3  | 4  | 5  | 6  | 7  | 8    |
| 9   | 10 | 11 | 12 | 13 | 14 | 15   |
| 16  | 17 | 18 | 19 | 20 | 21 | 22   |
| 23  | 24 | 25 | 26 | 27 | 28 | 29   |
| 30  | 31 |    |    |    |    |      |

PSSA 3-14

May 27 Last Day / Dismissal 12:00

| June |    |    |    |    |    | 2027 |
|------|----|----|----|----|----|------|
| S    | M  | T  | W  | T  | F  | S    |
|      |    | 1  | 2  | 3  | 4  | 5    |
| 6    | 7  | 8  | 9  | 10 | 11 | 12   |
| 13   | 14 | 15 | 16 | 17 | 18 | 19   |
| 20   | 21 | 22 | 23 | 24 | 25 |      |

Professional Development 06/01-06/04

|  |                             |
|--|-----------------------------|
|  | First day of school         |
|  | No School                   |
|  | No School / Teachers Report |
|  | PSSA Testing Window         |
|  | 250 American Celebrations   |
|  | Marking Period Ends         |
|  | Last Day of School          |